

**Belmont Yacht Club**  
**There & Back Regatta 2018**  
**Notice of Race**

**1. Rules**

1.1. The race will be governed by the rules as defined in The Racing Rules of Sailing.

**2. Eligibility and Entry**

2.1. The race is open to all boats.

2.2. Eligible boats may enter by completing the Entry Form (Attachment 1), Liability Release (Attachment 2), and sending them, together with the required fee, to [rc@belmontyc.org](mailto:rc@belmontyc.org) or Belmont Yacht Club, PO Box 13130, Chicago, IL 60613-0130. Fees may also be paid online by clicking the Donate link <http://belmontyc.org/competition/there-back>.

2.3. Late entries will be accepted until 2000 on Friday, August 3, 2018. There is a late entry fee of \$10.00 imposed for registration after July 20, 2018.

**3. Fees**

3.1. The entry fee is \$65.00 per boat through Friday July 20, 2018. As of July 21, 2018, the entry fee will be \$75.00 to include the late entry fee.

3.2. The fee includes a T-shirt, sandwiches on Friday, August 3 at the Captain's Meeting and heavy hors d'oeuvre at the Awards party after the race on Saturday, August 4 for 1. Additional items are available for purchase.

**4. Schedule**

4.1. The Captain's Meeting will take place on Friday, August 3, 2018, from 1800 until 2000 at the BYC Club Ship located at the north end of Belmont Harbor north of B dock.

4.2. The first warning will be at 0750 on Saturday, August 4, 2018, with the first start at 0800.

**5. The Sailing Instructions**

Will be available on the Website one week before the race and at the Captain's Meeting.

**6. Classes**

6.1. There will be up to 4 classes depending on number of registrants. The classes may include single- and double-handed for both spinnaker and jib and main.

**7. The Courses**

7.1. All sailing will take place on the Chicago lakefront between Wilmette Harbor and the 68<sup>th</sup> Street Crib.

7.2 The course lengths will be approximately between 14.43 and 44.43 nm.

**8. Scoring**

8.1. PHRF Corrected Time on Distance will be used for scoring.

**9. Radio Communication**

9.1. All boats will monitor Channel 69.

**10. Prizes**

10.1. Prizes will be awarded based on paid entries received as of July 20, 2018 for each section.

**11. Disclaimer of Liability**

11.1. Competitors participate in the race entirely at their own risk. See Rule 4, Decision to Race. The Organizing Authority will not accept any liability for material damage or personal injury or death sustained in conjunction with or prior to, during, or after the Regatta.

11.2. All competitors are required to complete and submit the waiver of liability, Attachment 2.

**12. Insurance**

12.1. Each participating boat shall be insured with valid third-party liability insurance.

**13. Overnight Mooring**

13.1. All mooring arrangements must be made with Westrec at Belmont Harbor 312-742-7673.

**14. Further Information**

14.1. Write to [rc@belmontyc.org](mailto:rc@belmontyc.org) or call 773.871.4424 (club voice mail). Web site: <http://belmontyc.org/competition/there-back>.

**Attachment 1**  
**Belmont Yacht Club**  
**There & Back Regatta 2018**  
**Entry Form**

Boat Name: \_\_\_\_\_

Sail #: \_\_\_\_\_ Make: \_\_\_\_\_ Model: \_\_\_\_\_

Select one from each of the following three sections:

A-       Jib & Main  
            Spinnaker

B-       Short Course  
            Long Course

\*\*\*\*\*

C-       Single-Handed  
            Double-Handed

Crew Name: \_\_\_\_\_

Home Club: \_\_\_\_\_ Email : \_\_\_\_\_

PHRF handicap: \_\_\_\_\_ PHRF Certificate # \_\_\_\_\_

Skipper Name: \_\_\_\_\_

Address: \_\_\_\_\_

City: \_\_\_\_\_ State: \_\_\_\_\_ Zip: \_\_\_\_\_

Cell Phone: ( \_\_\_\_ ) \_\_\_\_\_

Entry fee of \$65.00 per boat (\$75 after July 20) includes 1 official T-Shirt, sandwiches at Captain's Meeting and heavy hors d'oeuvre at Awards Party. Additional items may be purchased below.

	# of Items	Size(s)	Price @	Total Cost	Club Use
Entry Fee			65.00	\$65.00	
Late Fee			10.00		
Skipper's T-Shirt	1		n/c		
Add'l T-Shirts			25.00		
Add'l Friday Cook-Out			10.00		
Add'l Sat. Awards Party			15.00		
<b>Total Fees</b>					

## Attachment 2

### Belmont Yacht Club

### There & Back Regatta 2018

**PLEASE PRINT LEGIBLY, AND SIGN BELOW:**

SKIPPER'S NAME:

---

BOAT NAME:

---

### **LIABILITY RELEASE**

1. I understand that there are dangers and risks in any sailing activity and water sports in general.
2. I understand that Lake Michigan can be a dangerous body of water, posing significant hazard, including, but not limited to, sudden storms and unexpected changes in wind and water conditions, which can cause bodily injury, including death.
3. I hereby fully release Belmont Yacht Club, its Officers and Directors from any liability whatsoever, for lost cost, damage or expense (including attorneys' fees), for personal injury, including death, arising from or connected in any way with my participation in the There & Back Regatta.
4. I warrant that I fully understand the operation of the vessel I am racing and its propulsion system, both sail and power.
5. I agree to be bound by *The Racing Rules of Sailing* and by all other *rules* that govern this event.
6. I release for use in promotional material any photo and /or video image or quotation of me while I engage in the Regatta.

**I have read, understand and will comply with this Release:**

**Signature:** \_\_\_\_\_

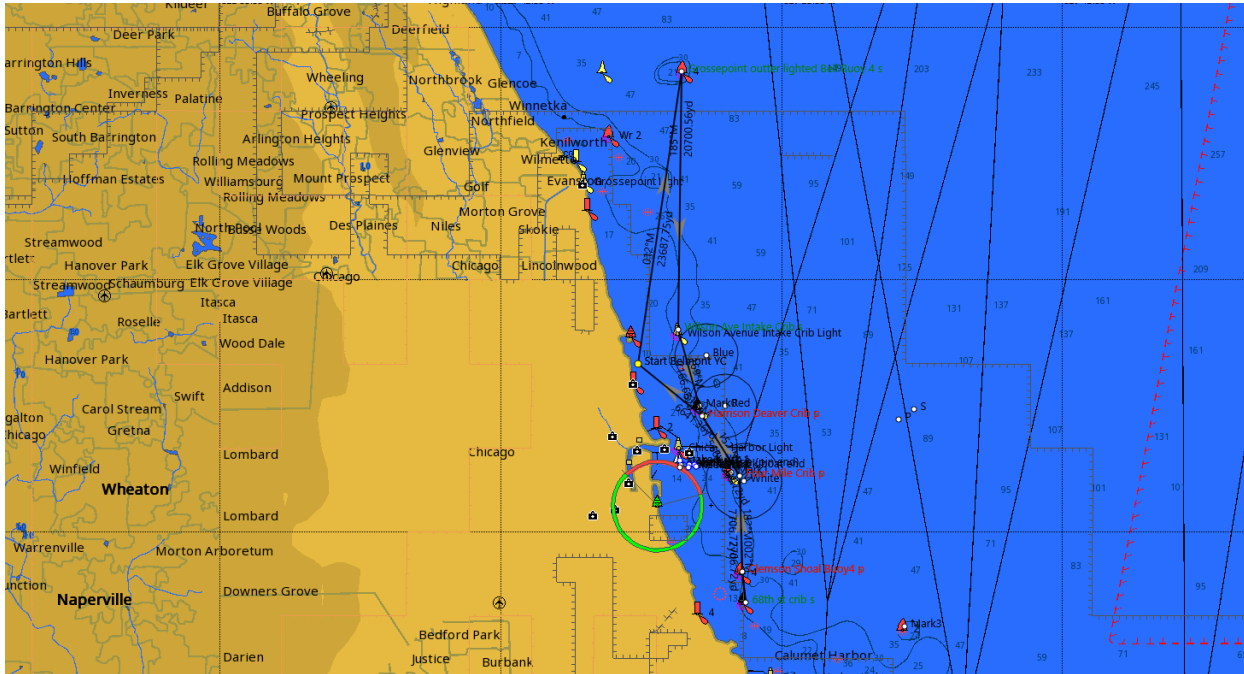
**Printed name:** \_\_\_\_\_

**Date:** \_\_\_\_\_

Submit Liability Release along with Entry Form & fees to: [rc@belmontyc.org](mailto:rc@belmontyc.org) (may pay via PayPal Donate link at <http://belmontyc.org/competition/there-back>)

OR mail to: Belmont Yacht Club RC  
PO Box 13130  
Chicago, IL 60613-0130      773.871.4424 (club voice mail)

# Long Course

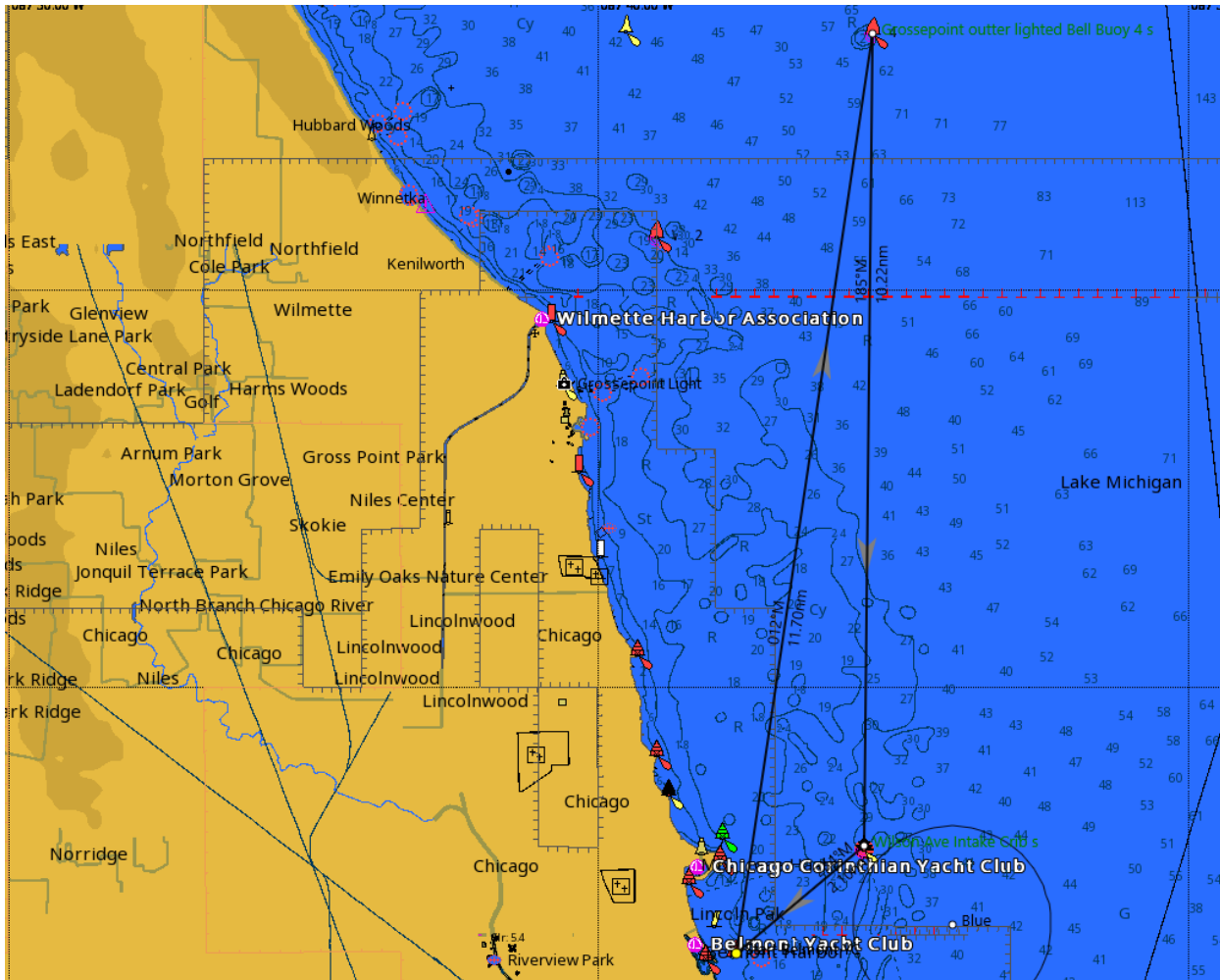


Belmont there and back



Mark	Latitude	Longitude	Bearing	Range nm	Comment
Start Belmont YC	41 56.651n	087 37.658w			
Grossepointe outer lighted Bell Buoy 4 S	42 08.220n	087 35.348w	012	11.70	
Wilson Ave Intake Crib	S 41 58.000n	087 35.500w	185	10.22	
Harrison Deaver Crib	S 41 54.590n	087 34.230w	169	3.54	
Four Mile Crib	S 41 52.220n	087 32.230w	152	2.80	
Clemson Shoal Buoy 4	S 41 48.417n	087 32.081w	182	3.81	
68th st crib	S 41 47.181n	087 31.881w	177	1.24	
Clemson Shoal Buoy 4	P 41 48.417n	087 32.081w	357	1.24	
Four Mile Crib	P 41 52.220n	087 32.230w	002	3.81	
Harrison Deaver Crib	P 41 54.590n	087 34.230w	332	2.80	
Start Belmont YC	41 56.651n	087 37.658w	313	3.28	
				44.43	

# Short 1

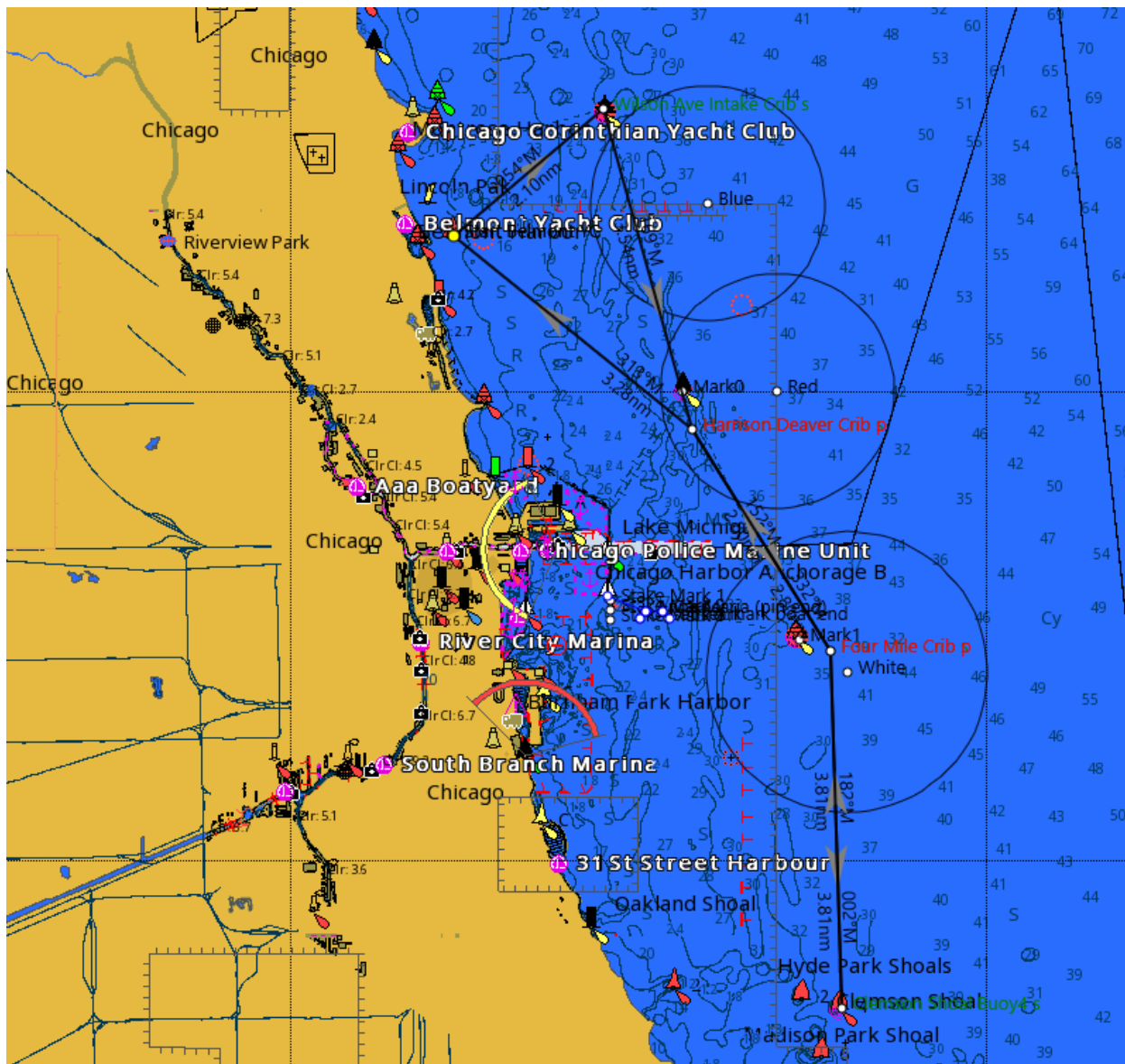


Belmont there and back



Mark	Latitude	Longitude	Bearing	Range nm	Comment
Start Belmont YC	41 56.651n	087 37.658w			
Grossepoint outer lighted Bell Buoy 4 S	42 08.220n	087 35.348w	012	11.70	
Wilson Ave Intake Crib	S 41 58.000n	087 35.500w	185	10.22	
Start Belmont YC	41 56.651n	087 37.658w	234	2.10	
				24.01	

## Short 2

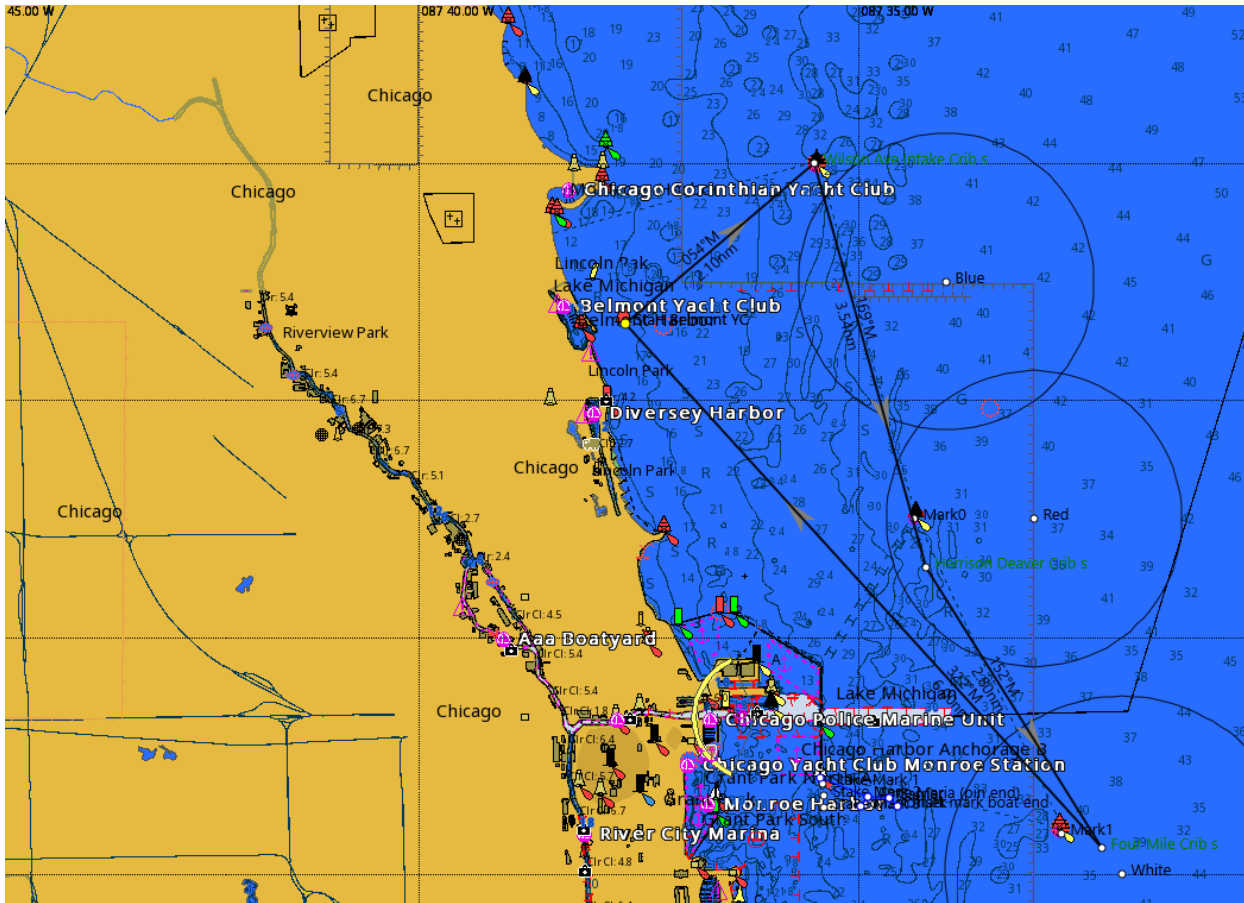


### Belmont there and back

Mark	Latitude	Longitude	Bearing	Range nm	Comment
Start Belmont YC	41 56.651n	087 37.658w			
Wilson Ave Intake Crib	S 41 58.000n	087 35.500w	054	2.10	
Harrison Deaver Crib	S 41 54.590n	087 34.230w	169	3.54	
Four Mile Crib	S 41 52.220n	087 32.230w	152	2.80	
Clemson Shoal Buoy4	S 41 48.417n	087 32.081w	182	3.81	
Four Mile Crib	P 41 52.220n	087 32.230w	002	3.81	
Harrison Deaver Crib	P 41 54.590n	087 34.230w	332	2.80	
Start Belmont YC	41 56.651n	087 37.658w	313	3.28	



# Short 3



## Belmont there and back

Mark	Latitude	Longitude	Bearing	Range nm	Comment
Start Belmont YC	41 56.651n	087 37.658w			
Wilson Ave Intake Crib	S 41 58.000n	087 35.500w	054	2.10	
Harrison Deaver Crib	S 41 54.590n	087 34.230w	169	3.54	
Four Mile Crib	S 41 52.220n	087 32.230w	152	2.80	
Start Belmont YC	41 56.651n	087 37.658w	322	6.00	
				14.43	